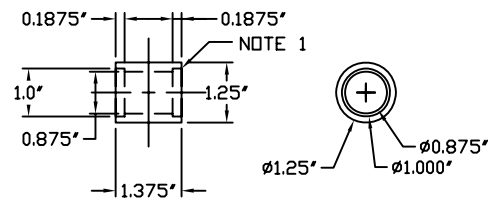
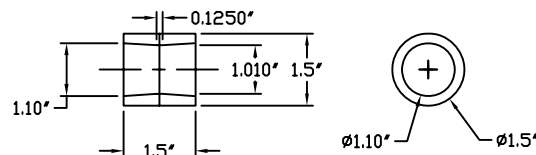


Quantity: 4
 Material: CRS as shown
 HUB Notes:
 1. Coordinate with seal used.
 (Designed for seal 3/16" W x 1" OD)
 2. Coordinate ID of hub with bushing used.
 Bushing to be .875" OD x .75" ID x ??? L



Detail
 Outboard Hub

Quantity: 4
 Material: CRS as shown
 HUB NOTES:
 1. Taper not shown in this view.
 Coordinate with matching taper of
 Metalastic bushing used.



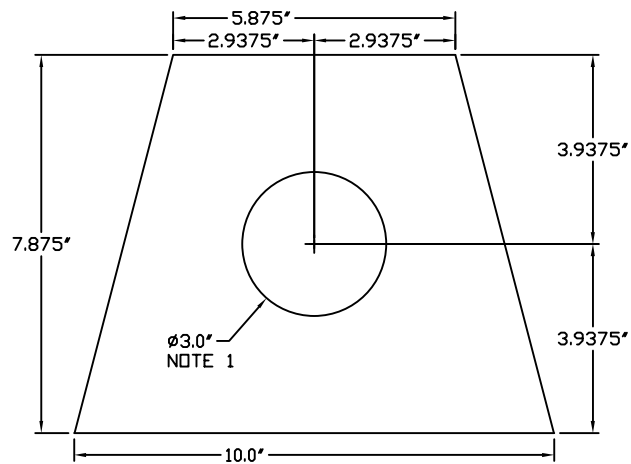
Detail
 Inboard Hub

Assembly Notes:
 1. Skip weld gusset to tubes.
 2. 1.125" OD x .095" Wall DOM tubing.

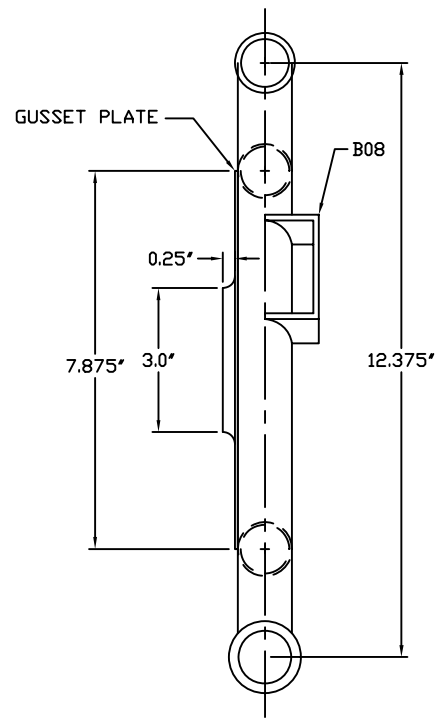
Material: As noted
 Quantity: 2 (1 as shown and 1 mirror image.
 Sway bar bracket on opposite side.)

Gusset Plate Notes:
 1. Formed hole size as
 shown with 1/4" radius
 on edges.

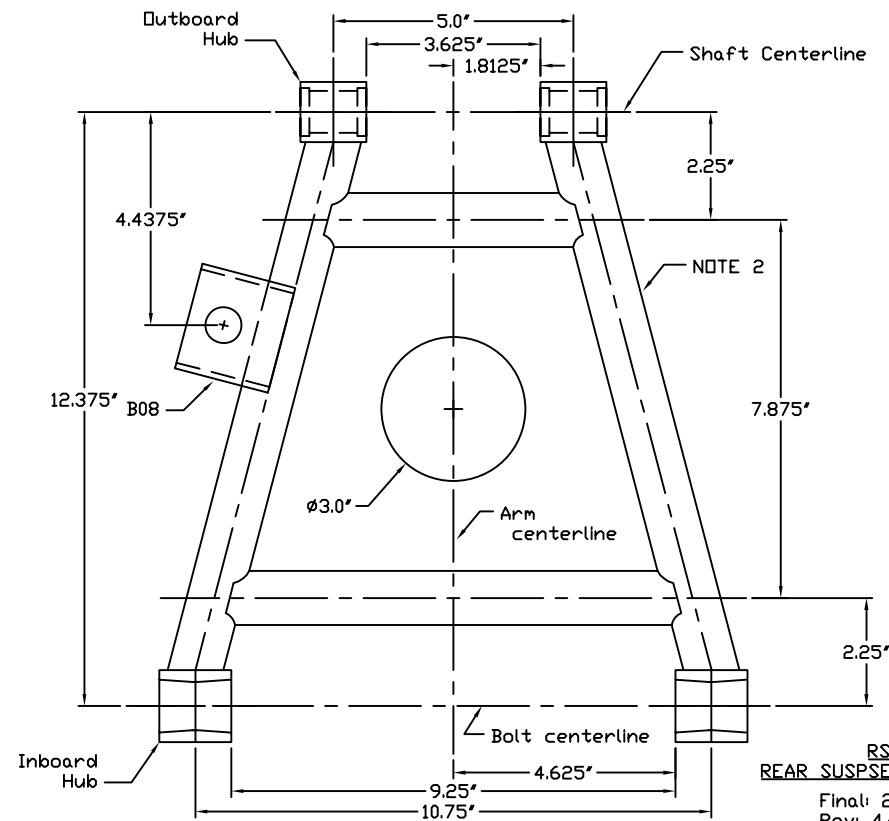
Quantity: 2
 Material: .065"



Detail
 Gusset Plate



Assembly
 Right Side - Front
 View



Assembly
 Right Side - Top View

RS06
 REAR SUSPENSION A-ARM

Final: 2/18/05
 Rev: 4/26/05
 Rev: 5/1/06
 Rev: 6/23/06
 Rev: 9/20/06

Rev.	Description	Date	FOR PRIVATE USE ONLY		Drawings developed by:	MISCELLANEOUS PARTS	Line is 1 inch	Scale	Title	Drawing Number
	289 Roadster Misc Parts		Copying any part of this document without the written consent of the Developer is prohibited.		Chuck Lindquist	289 COBRA ROADSTER	at full scale	1" = 2"	RS06	RDMP05
	Drawing Registration No. xxx				Danville, CA.		(if not 1" scale			
	Name: Sample				chuckcobra @ aol.com		accordingly)			
	Date: April 2014									